

RFP 44 DECT Base Station

The ideal entry level DECT base station for any business with low traffic requirements

Key Features

- 4 simultaneous voice channel support
- New modern design!
- Custom front plate cover options
- Adapts easily to interior decors
- Supports mixed-environments with other RFP4x models
- Natively run the SIP-DECT Open Mobility Manager (OMM) provisioning and SIP software without extra hardware
- No license required for up to 5 base-station deployments



The RFP 44 is designed for customers who are looking for an entry-level DECT base station that can provide wide wireless coverage in low traffic environments. The sleek design of the RFP 44 coupled with its various color options allow it to blend well with many interior decors. This base station can deliver clear audio while supporting up to 4 voice channels simultaneously. The RFP44 is compatible with Mitel's RFP4x family of base-stations in a mixed-environment deployment that optimizes coverage and density.

Modern and Easy to Install

The RFP44 has an unobtrusive design that adapts well to interiors for discreet set ups. The mounting bracket can be separated for easy and independent installations and replacements on wall and ceilings.

Use Indoors or Outdoors

Safe for outdoors use when fitted with the IP66 rated external housing cover to protect it from elements.

Custom Color Options

The front plate cover plate of the RFP44 comes in a Charcoal color option or can be customized to blend in with interior decors.

GENERAL INFORMATION

- Requires SIP-DECT 8.0 software or higher
- Replaces the RFP32 / RFP35
- Centralized DECT & SIP configuration, clustering administration via separate Open Mobility Manager (OMM) provisioning and SIP software
- Supports natively running the OMM provisioning application for installations up to 256 RFPs and 512 handsets/users.
- Simplified Licensing. No base-station licenses required for up to 5 base-station deployments
- Supports Messaging and Alarms

DECT FEATURES

- All DECT channels supported for maximum use of the DECT capacity (120 duplex channels in EMEA, 50 in US/CAN)
- 4 simultaneous voice channels per RFP and 4 channels for switching purposes
- GAP standard supported
- Handover and Roaming support
- DSAA authentication between base and handset
- Support of DECT encryption
- Integrated DECT dipole antenna
- Supports Enhanced DECT security
- DECT XQ technology for minimization of interferences in reflecting environments
- Supports Over-the-Air DECT Handset software upgrades
- Supports Over-the-Air Synchronization

INSTALLATION

- New separate mounting bracket to ease installation and wire routing needs
- Supports wall-mount & ceiling-mount
- 1 LED to signal current operating state
- Powered via IEEE 802.3af (Class 2)

NETWORKING

- 1 x IEEE 802.3 10/100BaseT
- 802.3af Power-over-Ethernet (Class 2)
- VLAN Support
- 802.1x Support
- QoS supported by Diffserv / ToS
- NTP time synchronization support

VOIP

- Connect to IP PBX via LAN
- SIP protocol support per RFC 3261
- Secure SIP over TLS, SRTP
- G.711, G.722, G.729ab1 codecs support
- Adaptive jitter compensation
- Echo cancellation / suppression
- Voice Activity Detection
- Comfort Noise Generation

TECHNICAL DATA

- Colour: White
- Dimensions (W x H x D):
 - 150 x 150 x 40 mm
- Weight: 327 g
- Material: ABS
- Connectors:
 - 1 x RJ45 Ethernet Jack
 - Reset Button
- MTBF Rate: 40 years
- Operating Voltage: 37 VDC min and 57 VDC max
- Current consumption: 85 mA at 55VDC
- Type of ingress protection: IP 20
- Flame resistance UL94 HB
- DECT Frequencies
 - Europe, Middle East
 - Australia, New Zealand
 - North America
 - South America

ENVIRONMENTAL

- **RFP Operational:**
 - Temperature -10°C to +45°C
 - Humidity 34% at +45°C
 - Humidity 95% at +29°C
- **Storage:**
 - Temperature -40°C to +70°C
 - Humidity 15% at +70°C
 - Humidity 95% at +29°C

REGULATORY STANDARDS

EMC/RADIO

- **European Union:**
 - 2014/53/EU (RED)
 - 2011/65/EU (RoHS)
 - EN 301 489-1, 6
 - EN 301 406
 - EN 50385
 - EN 60945 :2002 (Clause 1C, EMC only)
- **Canada:**
 - ICES-003 (Class B)
 - RSS-GEN
 - RSS-213 (DECT)
- **USA: CFR Title 47, Part 15 (Class B)**
 - FCC Part 15 Subpart C
 - (DECT) FCC Part 15 Subpart D
- **Australia / New Zealand:**
 - AS/NZS 4771

SAFETY

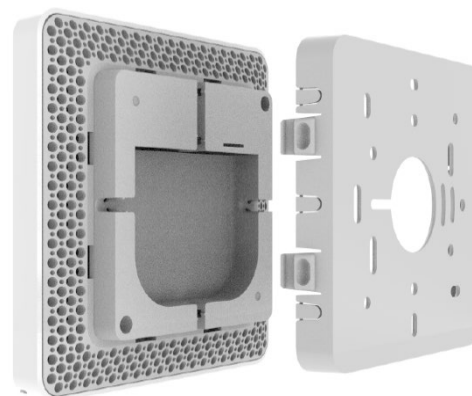
- **Canada:** CAN/CSA C22.2 NO. 60950-1
- **USA:** UL 60950-1
- **European Union:** EN 60950-1
- **Australia/New Zealand:** AS/NZS 60950-1

INCLUDED IN THE BOX

- RFP44 Base Station
- Mounting Bracket, 2 screws & screw anchor
- Circular Mitel Logo Plate
- Installation & regulatory documents

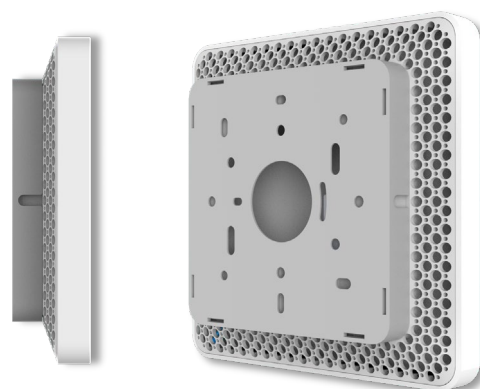
PART NUMBERS

Model	Part Number
RFP 44 Base Station	50006973
48VDC Ethernet Pwr Adapter 100-240V 802.3af (Optional)	51015131



RFP45 Rear View

Mounting Bracket



RFP45 Side View

RFP45 with Mounting
Bracket attached